

称重传感器 LOAD CELL

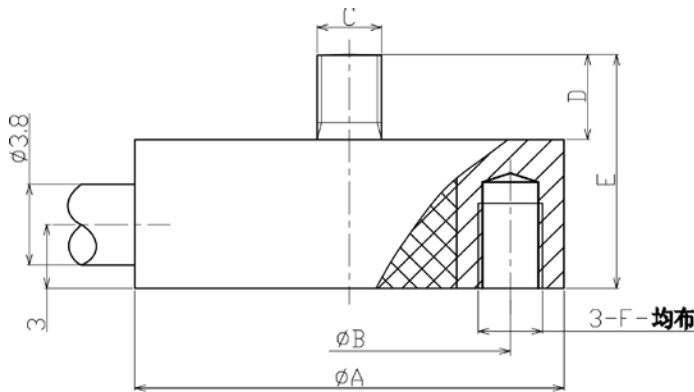
MDS 称重传感器

MDS Load Cell

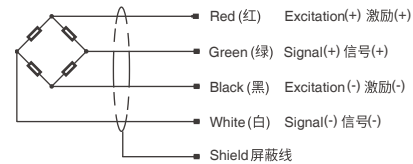


- Maximum capacity (E<sub>max</sub>) 额定载荷 (kg):  
2, 5, 10, 20, 50, 100, 200, 500, 1000, 2000
- Be suitable for a wide range of applications including testing or weighing systems.  
适用于力的测量及控制, 实验机等测力装置

外形尺寸 Dimensions(in mm)



接线图 Wiring code



量程 Capacity(kg)	ØA	ØB	C	D	E	F
2-200	20	15	M3	4	11	M3dp4
500-2000	25.4	18	M5	5	15	M4dp5

技术参数 Specifications

额定载荷 Rated Load	kg	2, 5, 10, 20, 50, 100, 200, 500
	t	1, 2
额定输出 Rated Output	mV/V	1~1.5±0.2
零点平衡 Zero Balance	%R.O.	±1
综合误差 Comprehensive Error	%R.O.	0.3
蠕变 (30 分钟) Creep after 30 minutes	%R.O.	0.05
推荐激励电压 Recommended excitation voltage	VDC	5-12 /15(max)
输入阻抗 Input impedance	Ω	350±5
输出阻抗 Output impedance	Ω	350±3
绝缘阻抗 Insulation resistance	MΩ	≥5000 (50VDC)
安全过载 Safe overload	%R.C.	150
极限过载 Ultimate overload	%R.C.	300
弹性元件材料 Material		Aluminum 铝合金 or Stainless Steel 不锈钢
防护等级 Degree of protection		IP65/IP67
接线方式 Wiring code	Ex:	红 Red: + 黑 Black:-
	Sig:	绿 Green: + 白 White:-