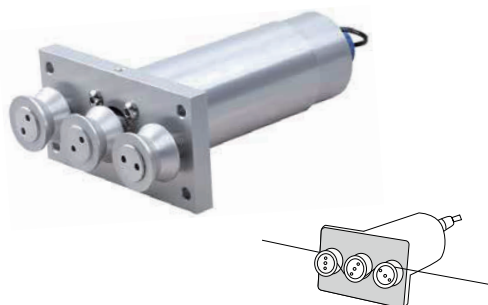


张力传感器 TENSION SENSOR TR 张力传感器 TR Tension Sensor

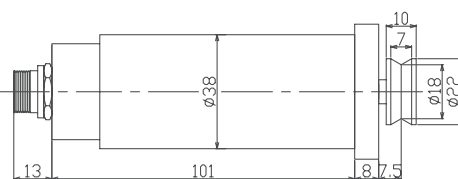
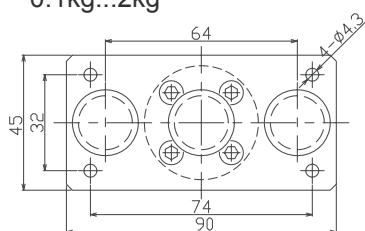


- Maximum capacity (E_{max}) 额定载荷 (kg):
0.1, 0.2, 0.5, 1, 2, 5, 10, 20, 50
- Be suitable for on-line tension measurement, such as rope, fiber, electric wires, metal wire and other similar products.

应用于在线测量如缆绳, 纤维, 电线, 金属丝等以及类似的产品进行在线连续的张力测量

外形尺寸 Dimensions(in mm)

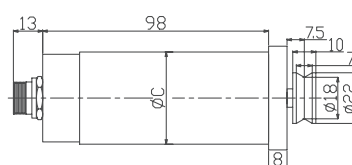
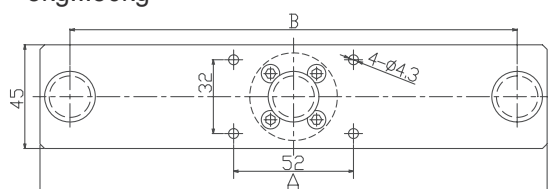
0.1kg...2kg



接线图 Wiring code



5kg...50kg



	A	B	C
TR-5kg	120	94	38
TR-10kg	120	94	38
TR-20kg	220	194	40
TR-50kg	270	244	43

技术参数 Specifications

额定载荷 Rated Load	kg	0.1, 0.2, 0.5, 1, 2, 5, 10, 20, 50
额定输出 Rated Output	mV/V	1.5
零点平衡 Zero Balance	%R.O.	±1
综合误差 Comprehensive Error	%R.O.	±0.3
推荐激励电压 Recommended excitation voltage	VDC	5-12 / 15(max)
输入 / 输出阻抗 Input / Output impedance	Ω	380±10 / 350±5
绝缘阻抗 Insulation resistance	MΩ	≥5000 (50VDC)
安全 / 极限过载 Safe / Ultimate overload	%R.C.	150 / 300
弹性元件材料 Material		Aluminum 铝合金
防护等级 Degree of protection		IP65
电缆线长度 The length of the cable	m	3