

称重传感器 LOAD CELL

LCF500 称重传感器

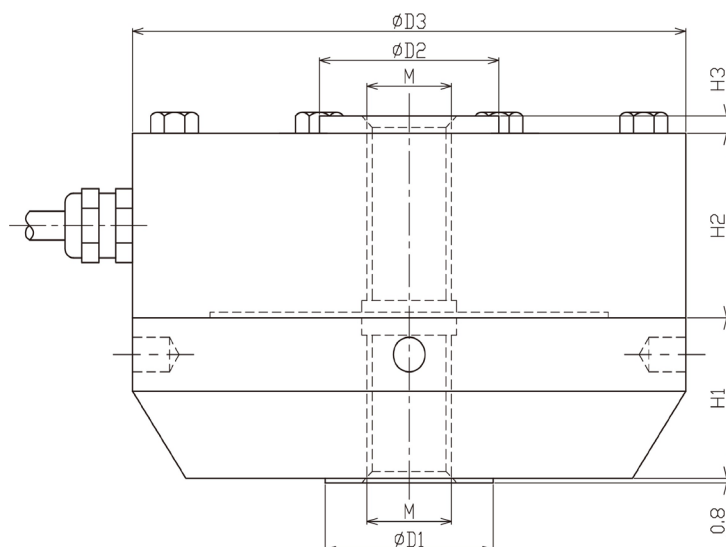
LCF500 Load Cell



- Maximum capacity (Emax) 额定载荷 (KN):
2.5, 5, 10, 25, 50, 100, 250, 500
- Be suitable for the fields of Truck scales, Rail scales, Ground scales, Heavy capacity Platform scales, Hopper and Tank Weighing, Testing Machines.

适用于汽车衡、轨道衡、地上衡、大量程平台秤、料斗秤和料罐秤、材料实验机

外形尺寸 Dimensions(in mm)



接线图 Wiring code



| 量程 Capacity (t) | H1 | H2 | H3 | ØD1 | ØD2 | ØD3 | M |
|----------------------|------|------|-----|-----|-----|-----|-------|
| 0.25, 0.5, 1, 2.5, 5 | 28.6 | 31.7 | 3.1 | 32 | 34 | 105 | M16 |
| 10, 25 | 44.5 | 41.4 | 3.1 | 57 | 67 | 154 | M33*2 |
| 50 | 50.8 | 57.2 | 6.3 | 76 | 96 | 203 | M42*2 |

技术参数 Specifications

| | | |
|---------------------------------------|----------------------------------------------------------|-----------------------------------|
| 额定载荷 Rated Load | KN | 2.5, 5, 10, 25, 50, 100, 250, 500 |
| 额定输出 Rated Output | mV/V | 2.0(2.5KN-10KN), 3.0(25KN-500KN) |
| 零点平衡 Zero Balance | %R.O. | ±1 |
| 综合误差 Comprehensive Error | %R.O. | ±0.03 |
| 蠕变 (30 分钟) Creep after 30 minutes | %R.O. | ±0.03 |
| 推荐激励电压 Recommended excitation voltage | VDC | 5-12/15(max) |
| 输入阻抗 Input impedance | Ω | 770±10 |
| 输出阻抗 Output impedance | Ω | 700±5 |
| 绝缘阻抗 Insulation resistance | MΩ | ≥5000 (50VDC) |
| 安全过载 Safe overload | %R.C. | 150 |
| 极限过载 Ultimate overload | %R.C. | 300 |
| 弹性元件材料 Material | Aluminum 铝合金 (2.5KN-10KN) / Alloy Steel 合金钢 (25KN-500KN) | |
| 防护等级 Degree of protection | IP66 | |