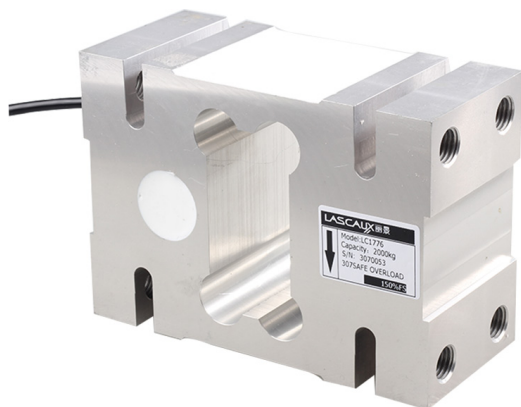


## 称重传感器 LOAD CELL

# LC1776 称重传感器

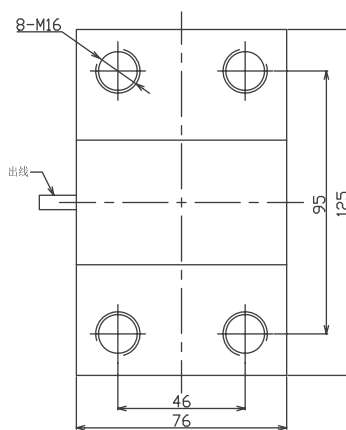
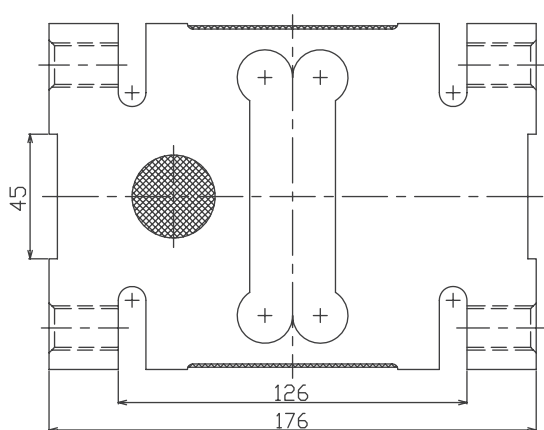
LC1776 Load Cell



- Maximum capacity (E<sub>max</sub>) 额定载荷 (t):  
0.75, 1, 2
- Be suitable for the fields of Electronic Scales, Counting Scales, Packaging Scales, Price-computing instrument, Industries of Foods, Pharmaceuticals, which has huge important on weighing and control.

适用于电子天平、计数秤、包装秤、计价秤、食品、医药等工业称重和生产过程称重

## 外形尺寸 Dimensions(in mm)



## 接线图 Wiring code



## 技术参数 Specifications

额定载荷 Rated Load	t	0.75, 1, 2
额定输出 Rated Output	mV/V	2.0±0.2
零点平衡 Zero Balance	%R.O.	±1
综合误差 Comprehensive Error	%R.O.	±0.02
推荐激励电压 Recommended excitation voltage	VDC	5-12 / 15(max)
输入阻抗 Input impedance	Ω	410±10
输出阻抗 Output impedance	Ω	350±5
绝缘阻抗 Insulation resistance	MΩ	≥5000 (50VDC)
安全过载 Safe overload	%R.C.	150
极限过载 Ultimate overload	%R.C.	200
弹性元件材料 Material		Aluminum 铝合金
防护等级 Degree of protection		IP66
电缆线长度 The length of the cable	m	3
建议台面尺寸 Maximum platform size	mm	1200•1200
拧紧力矩 Tightening torque	N•m	165