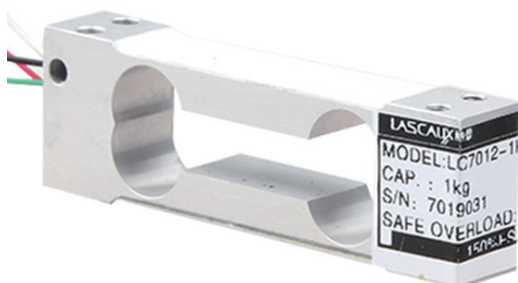


称重传感器 LOAD CELL

LC7012 称重传感器

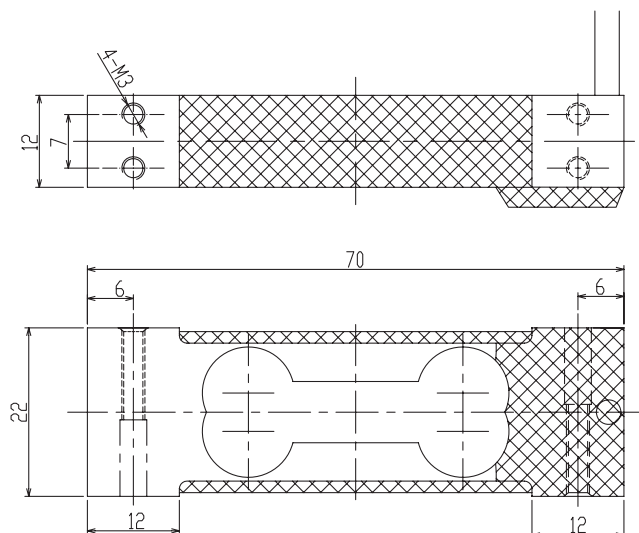
LC7012 Load Cell



- Maximum capacity (E_{max}) 额定载荷 (kg):
0.3, 0.5, 1, 2, 3
- Be suitable for the fields of Electronic Scales, Counting Scales, Packaging Scales, Price-computing instrument, Industries of Foods, Pharmaceuticals, which has huge important on weighing and control.

适用于电子天平、计数秤、包装秤、计价秤、食品、医药等工业称重和生产过程称重

外形尺寸 Dimensions(in mm)



接线图 Wiring code



技术参数 Specifications

额定载荷 Rated Load	kg	0.3, 0.5, 1, 2, 3
额定输出 Rated Output	mV/V	1.0(0.3kg~1kg), 2.0(2kg~3kg)
零点平衡 Zero Balance	%R.O.	±1
综合误差 Comprehensive Error	%R.O.	±0.02
推荐激励电压 Recommended excitation voltage	VDC	5-12 / 15(max)
输入阻抗 Input impedance	Ω	410±10
输出阻抗 Output impedance	Ω	350±5
绝缘阻抗 Insulation resistance	MΩ	≥5000 (50VDC)
安全过载 Safe overload	%R.C.	150
极限过载 Ultimate overload	%R.C.	300
弹性元件材料 Material		Aluminum 铝合金
防护等级 Degree of protection		IP66
电缆线长度 The length of the cable	m	0.4
建议台面尺寸 Maximum platform size	mm	200•200
拧紧力矩 Tightening torque	N•m	4