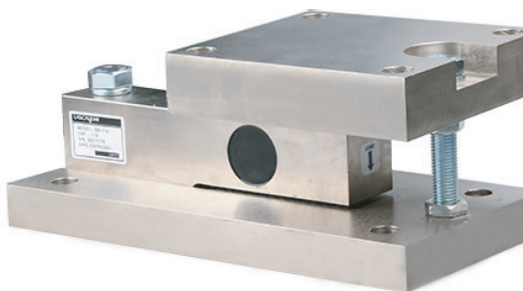


称重模块 Weighing Module

FW 称重模块

FW Weighing Module



- Maximum capacity (Emax) 额定载荷 (t):
0.5, 1, 2, 3, 5, 7.5
- Suitable for tanks, silo, and others weighing control.
适用于槽罐的配料称重控制

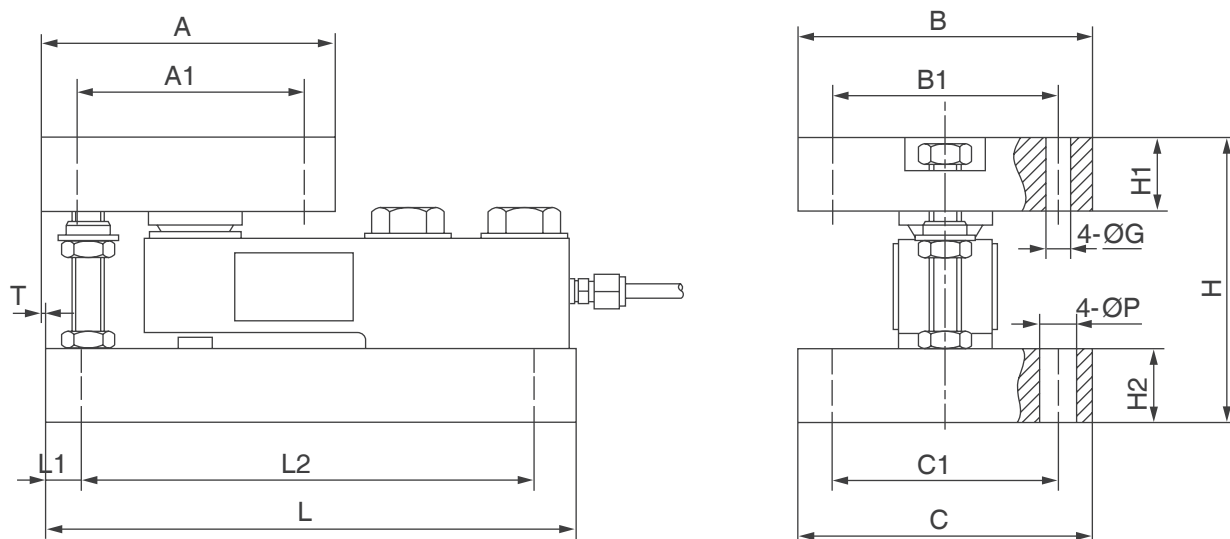
特点 Features

- 使用优质传感器，称量精度高
- 结构独特，可方便地安装在各种槽罐上
- 三种顶板结构（固定式、半浮动式、浮动式）
- 可以消除槽罐因热胀冷缩带来的称量误差
- 支撑螺栓，防止设备倾覆
- 优质合金钢，表面镀镍；不锈钢可选
- 安装简单、快速
- 维护方便，节约停机维护时间
- 适用于槽罐的配料称重控制
- High accuracy load cell, High comprehensive precision
- Unique structure, simplifies load cell installation on tanks, silo, and other weighing vessels
- Three different module types: Fixed, Semi-float, Full-float
- Remove the weighing error thermal expansion, contraction
- Support the bolt, prevent the equipment to avoid upsetting
- Alloy steel, nickel plating; Stainless steel material is available
- Easily and quickly install
- Reducing load cell damage and plant down-time
- Suitable for tanks, silo, and others weighing control

技术参数 Specifications

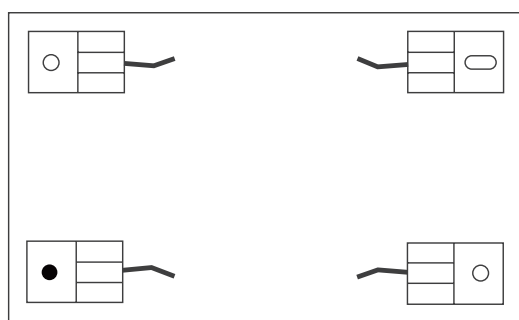
称重传感器 Load Cell		SB
额定载荷 (R.C.) Rated Load	t	0.5, 1, 2, 3, 5, 7.5
额定输出 (R.O.) Rated Output	mV/V	2.0±0.0050
安全过载 Safe overload	%R.C.	150
极限过载 Ultimate overload	%R.C.	300
防护等级 Protection class		IP67
接线方式 Wiring code	Ex:	红 Red: + 黑 Black:-
	Sig:	绿 Green: + 白 White:-

外形尺寸 Dimensions(in mm)



量程 (t)	L	L1	L2	A	A1	B	B1	C	C1	H	H1	H2	ØG	ØP	T
0.5,1,2,3	286	32	226	150	124	128	102	112	80	102	28	23	11	13	3
5,7.5	317.5	32	257	178	146	152	120	152	102	130	38	30	17.5	17	0

安装布置 Installation layout



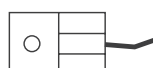
矩形布置
Rectangular layout



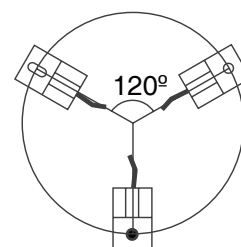
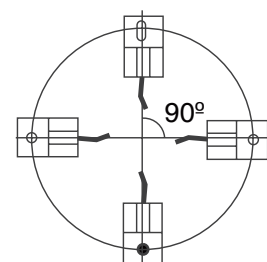
固定式
Fixed



全浮动式
Float



半浮动式
Semi-Float



径向布置
Radial Layout