

## 称重传感器 LOAD CELL

# STK 称重传感器

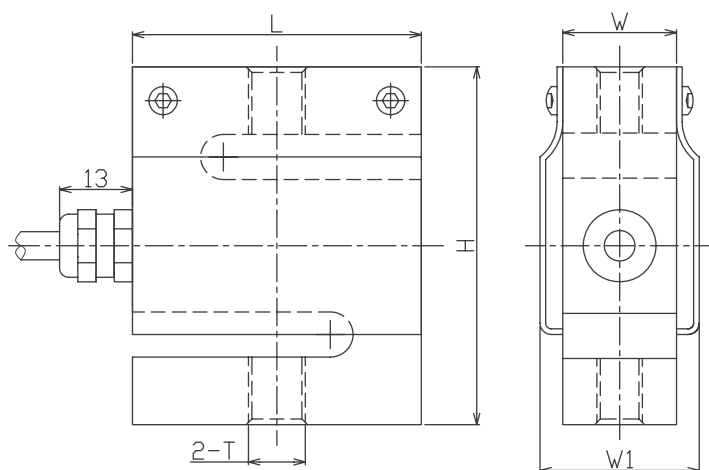
## STK Load Cell



- Maximum capacity (E<sub>max</sub>) 额定载荷 (kg):  
10, 20, 50, 80, 100, 200, 300, 500
- Be suitable for Crane Scales, Electronic mechanic scales, Hopper and Tank Weighing, Packing Scales, Quantitative Feeding Machine, Filling Machine, Universal Material Testing Machine and other electronic weighing devices.

适用于吊钩秤、机电结合秤、料斗秤、料罐秤、包装秤、配料称重控制、定量给料机、灌装机、通用材料试验机、力的监控及测量

## 外形尺寸 Dimensions(in mm)



CAPACITY 载荷 (kg)	L	H	W	W1	M
10, 20, 50, 80, 100	51	64	20	28	M10
200, 300, 500	64	82	23	27	M12

## 接线图 Wiring code



## 技术参数 Specifications

额定载荷 Rated Load	kg	10,20, 50,80,100,200,300,500
额定输出 Rated Output	mV/V	2.0±0.005
零点平衡 Zero Balance	%R.O.	±1
综合误差 Comprehensive Error	%R.O.	±0.03
推荐激励电压 Recommended excitation voltage	VDC	5-12 /15(max)
输入阻抗 Input impedance	Ω	380±10
输出阻抗 Output impedance	Ω	350±5
绝缘阻抗 Insulation resistance	MΩ	≥5000 (50VDC)
安全过载 Safe overload	%R.C.	150
极限过载 Ultimate overload	%R.C.	200
弹性元件材料 Material		Aluminum 铝合金
防护等级 Degree of protection		IP65
电缆线长度 The length of the cable	m	3