

## 称重传感器 LOAD CELL

### STM 称重传感器

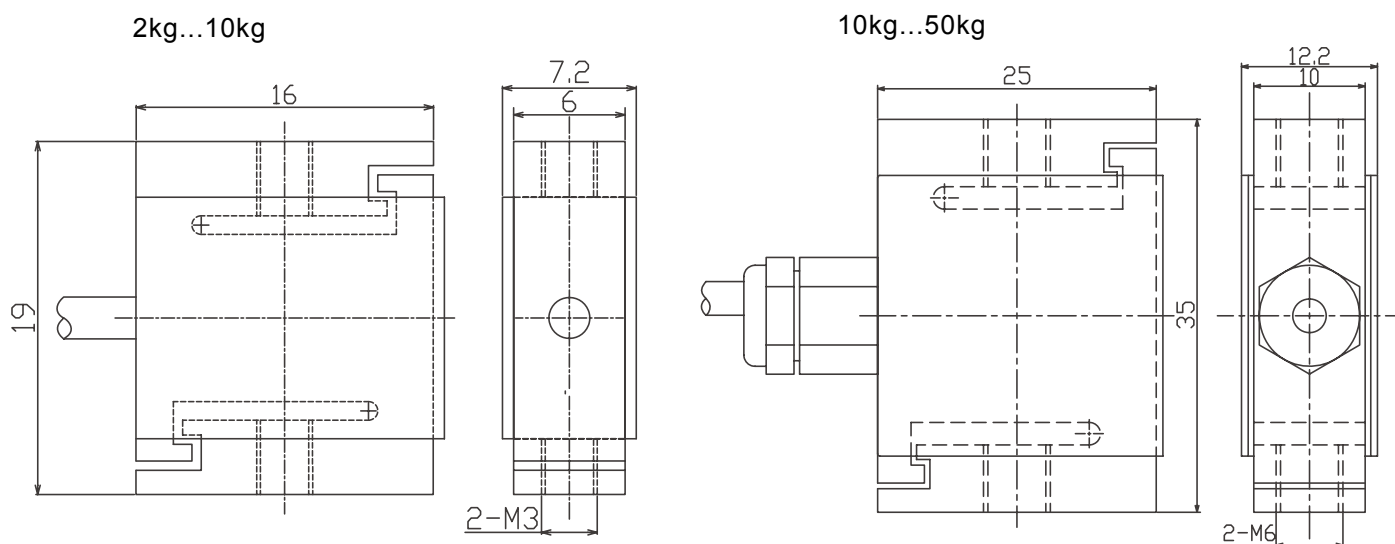
#### STM Load Cell



- Maximum capacity (E<sub>max</sub>) 额定载荷 (kg):  
2, 5, 10, 20, 50
- Be suitable for a wide range of applications including testing or weighing systems, and it can be put into the device, in order to monitor the force.

适用力的控制及测量，更可装入仪器内部，以便对工作过程力进行监控

#### 外形尺寸 Dimensions(in mm)



#### 技术参数 Specifications

额定载荷 Rated Load	kg	2, 5, 10, 20, 50
额定输出 Rated Output	mV/V	1(2kg), 2(5kg-50kg)
零点平衡 Zero Balance	%R.O.	±2
综合误差 Comprehensive Error	%R.O.	±0.05
推荐激励电压 Recommended excitation voltage	VDC	5-12 /15(max)
输入阻抗 Input impedance	Ω	350±5
输出阻抗 Output impedance	Ω	350±3
绝缘阻抗 Insulation resistance	MΩ	≥5000 (50VDC)
安全过载 Safe overload	%R.C.	150
极限过载 Ultimate overload	%R.C.	300
弹性元件材料 Material		Stainless Steel 不锈钢
防护等级 Degree of protection		IP65
电缆线长度 The length of the cable	m	2kg-10kg:1m 10kg-50kg:3m
接线方式 Wiring code	Ex:	红 Red: + 黑 Black:-
	Sig:	绿 Green(Blue): + 白 White:-